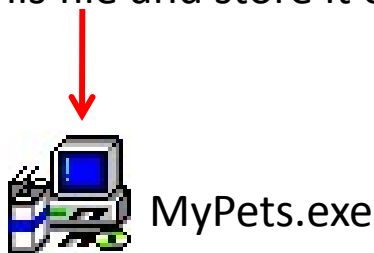


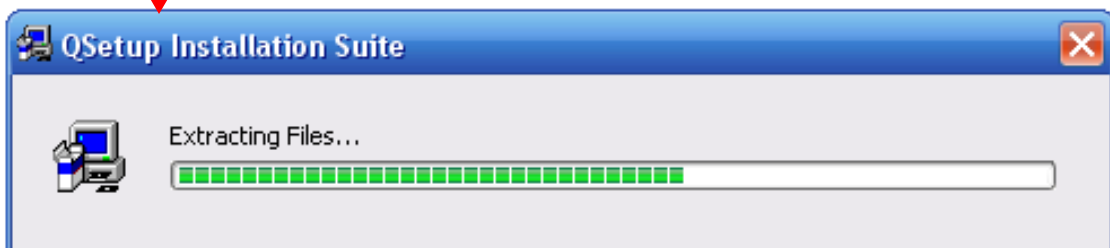
# INSTALLATION INSTRUCTIONS



**STEP 1:** After downloading MyPets software to your computer you will have a Icon like this one below. Make a backup copy of this file and store it on a backup drive or storage stick.

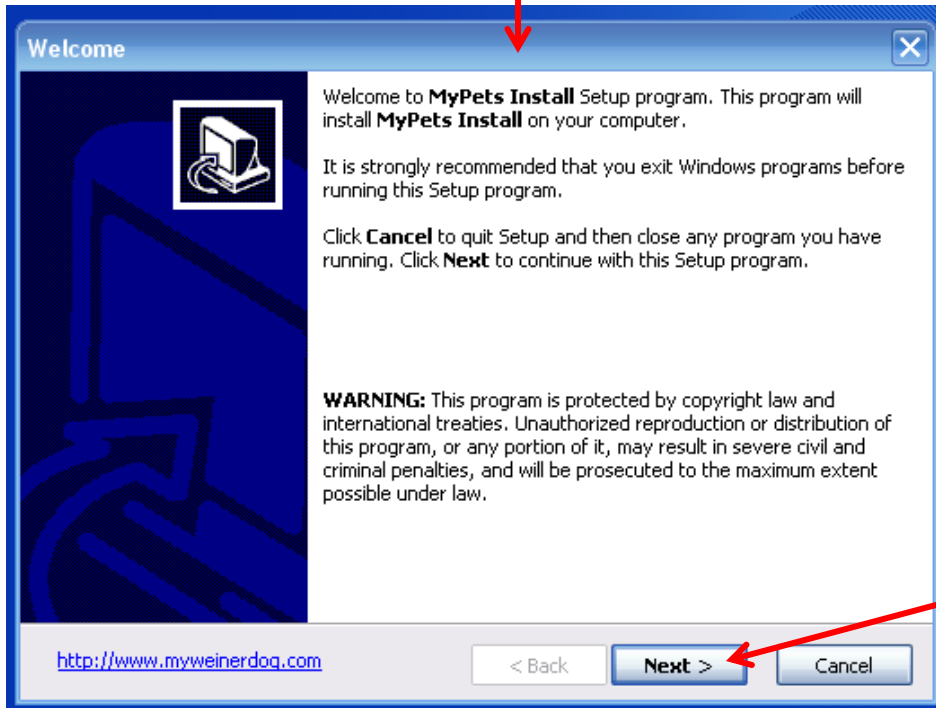
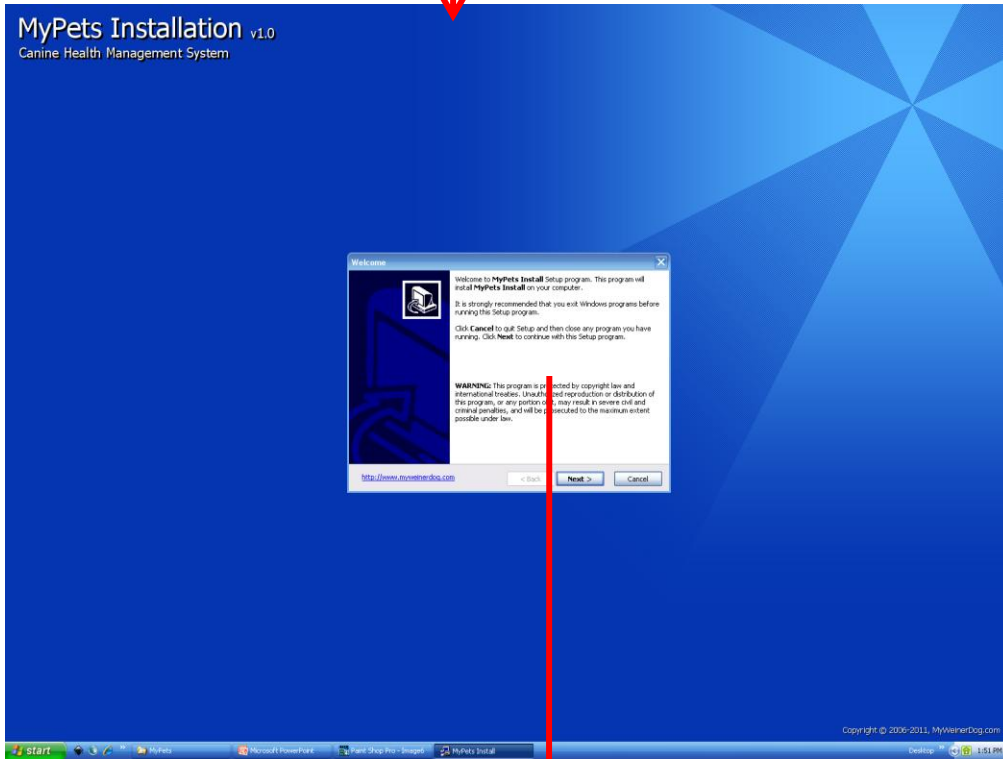


**STEP 2:** Double click icon to start installation screen below.



# INSTALLATION INSTRUCTIONS

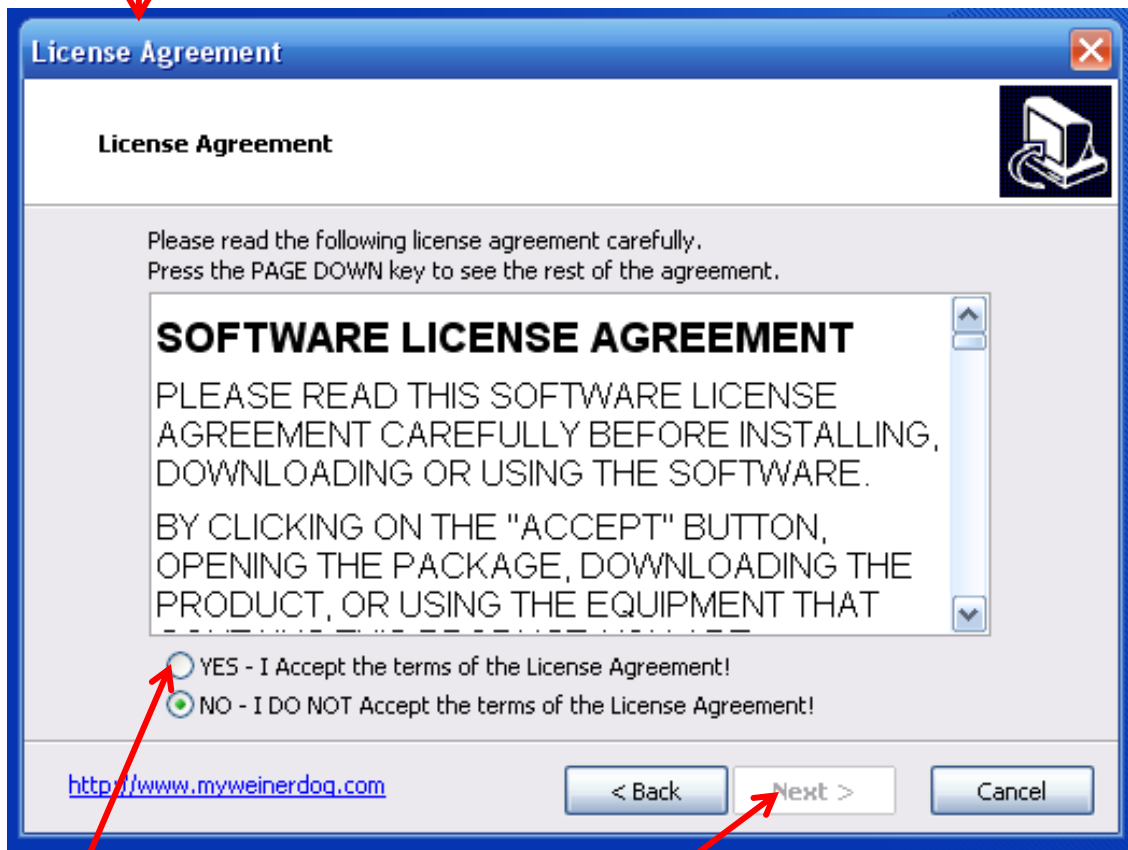
**STEP 3:** Read the Welcome screen and click Next button.



Click Next button.

# INSTALLATION INSTRUCTIONS

## STEP 4: Read Software Agreement.



Click Yes To Activate the Next button.

# INSTALLATION INSTRUCTIONS

**STEP 6:** Activating Software – In your email notification from PayLoadz.com, it will contain the Software Activation Key Code that you will enter in the is this screen below.

User Information

User Information

Type your name and the product serial number.

Name:

Serial:

Example Key Code: JV5-0J6-0X7-7L8-4C7-3U3

<http://www.myweinerdog.com>

< Back   Next >   Cancel

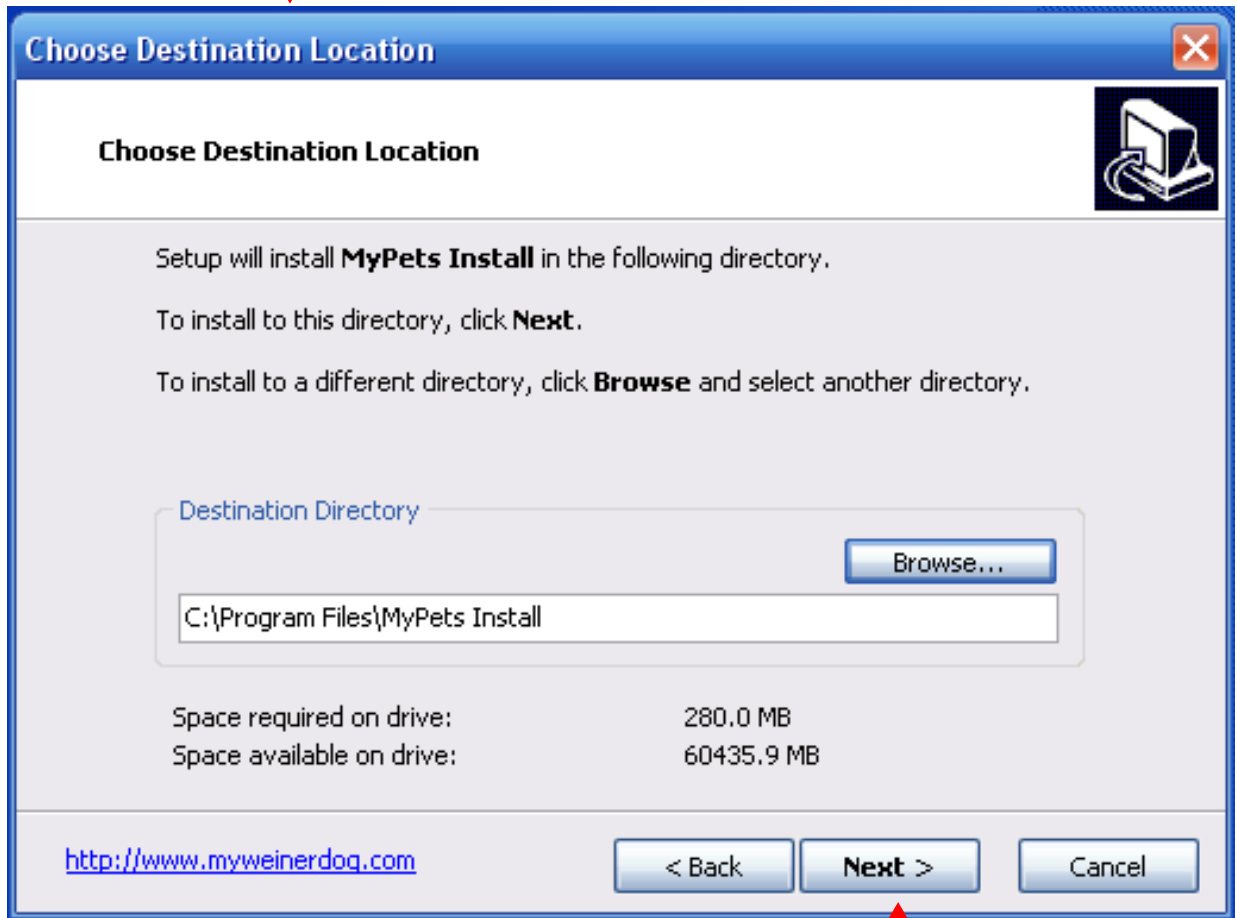
Note: You can copy and past the key code from your email.

Click Next button once you have entered the required Name and Serial/Key Code.

**Notice:** The Key Code is generated based on the name you entered and the date when you purchased this software and will only work with is copy.

# INSTALLATION INSTRUCTIONS

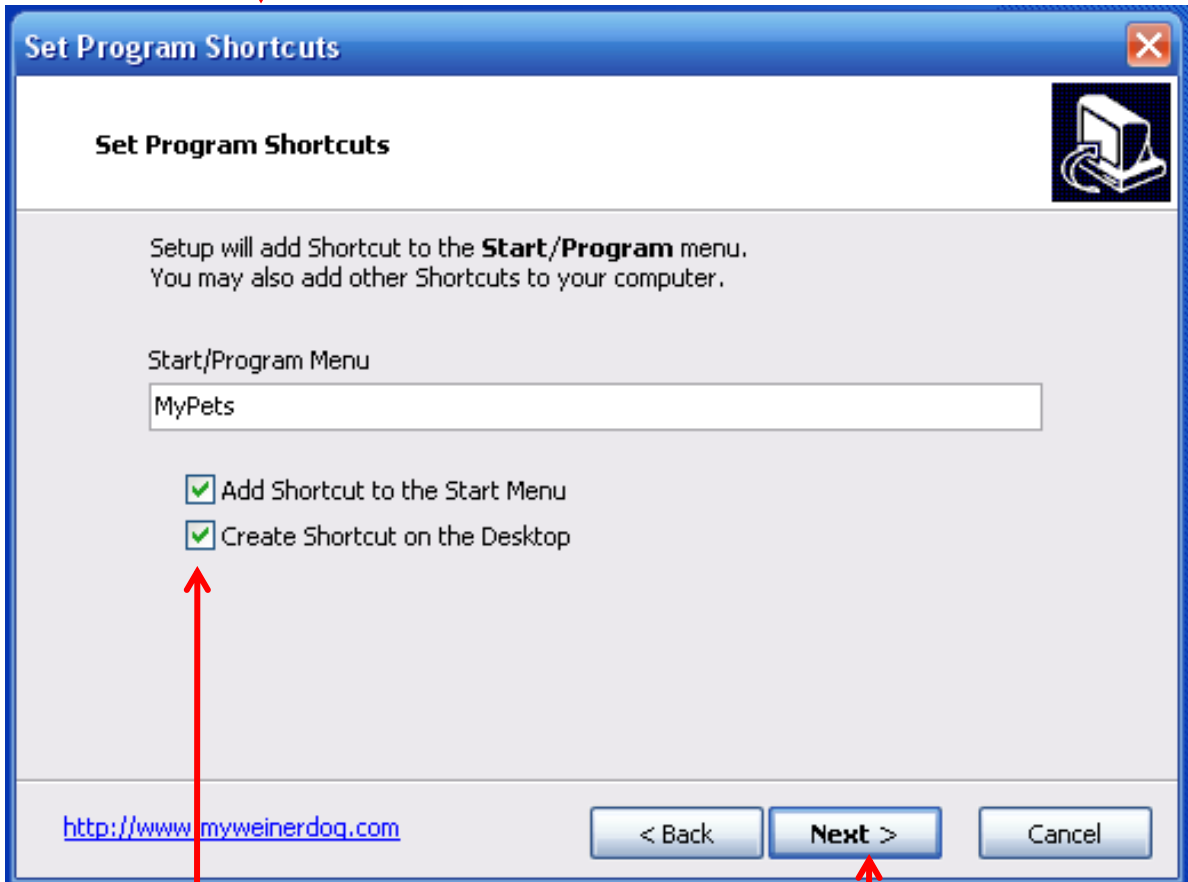
**STEP 7: This screen tells where the software will be installed. You can change the location **BUT THIS IS NOT RECOMMENDED.****



Click Next button once you have entered the required Name and Serial/Key Code.

# INSTALLATION INSTRUCTIONS

**STEP 8: This screen allows you to determine if you want the MyPets Icon placed on your Desktop and in the Start Menu and both are Recommended.**



Uncheck if you do not want these features installed but Not Recommended.

Click Next button to proceed to the next step.

# INSTALLATION INSTRUCTIONS

## Desktop and Start Menu Icons



This is the MyPets Installation Desktop Icon

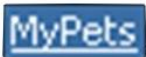


This is the MyPets Installation Start Menu Icons

The MyPets Install icon installs the MyPets v1.0 software program. This Two-Set installation allows you to re-install the MyPets v1.0 if the program ever stops working or is corrupted by a computer virus.

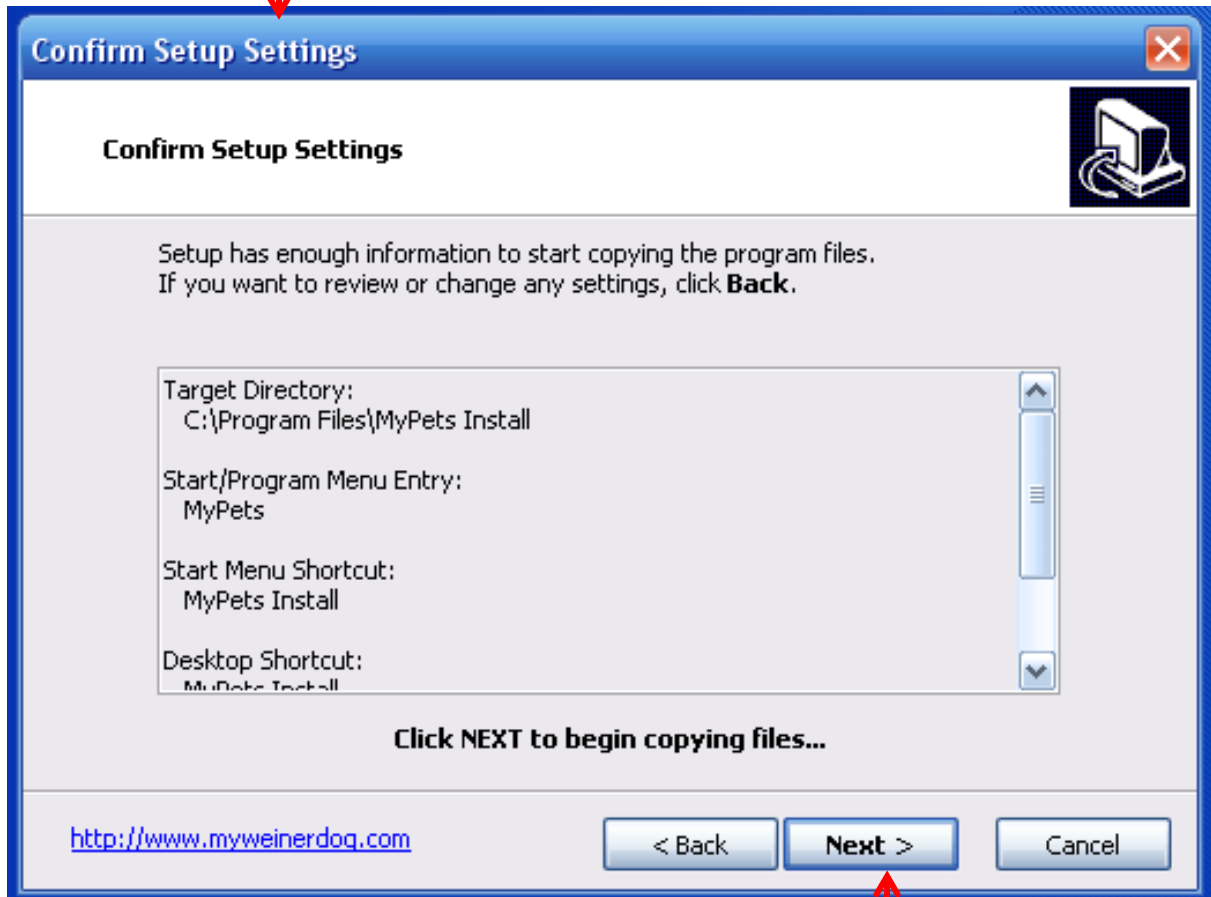


This is the MyPets v1.0 Desktop Icon



# INSTALLATION INSTRUCTIONS

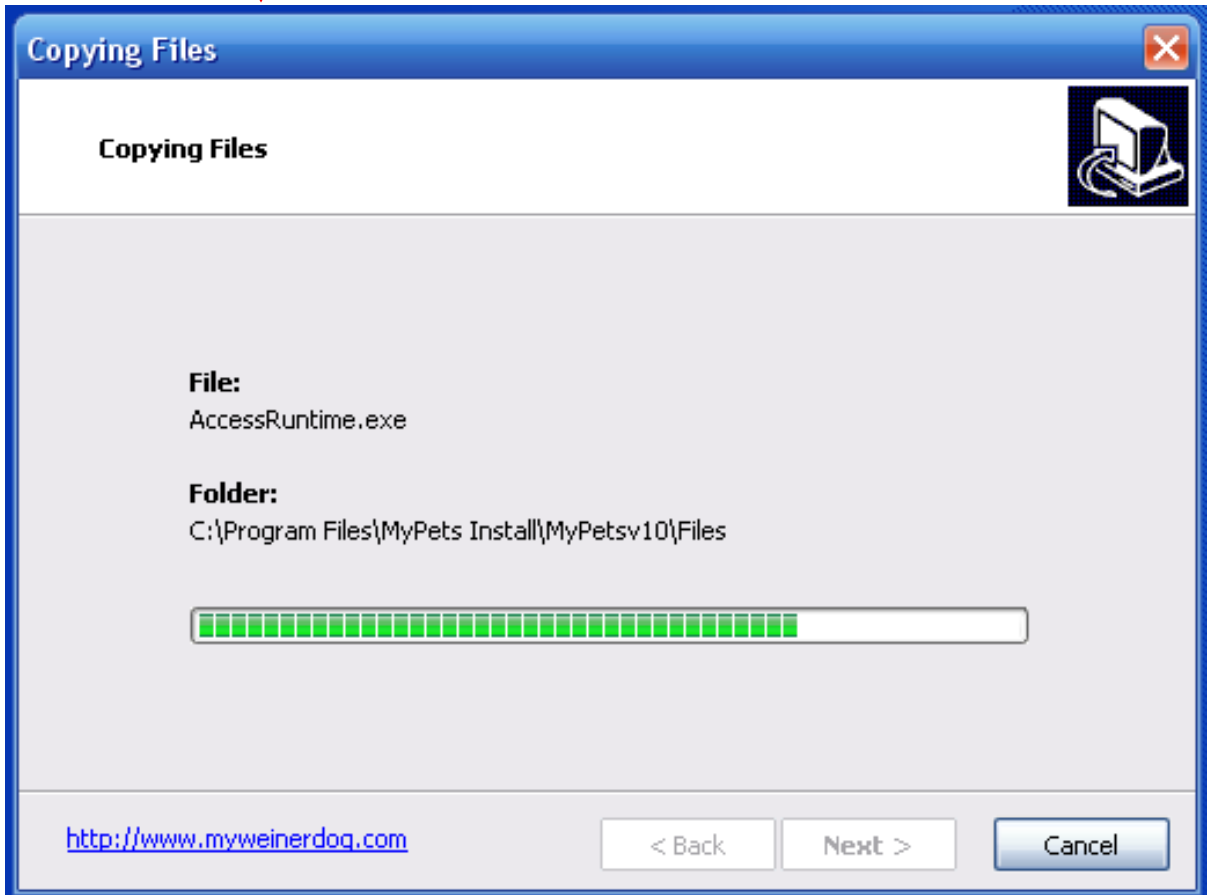
**STEP 9: This screen is telling you that process is ready to install the program files on your computer.**



Click Next to Start to complete installation.

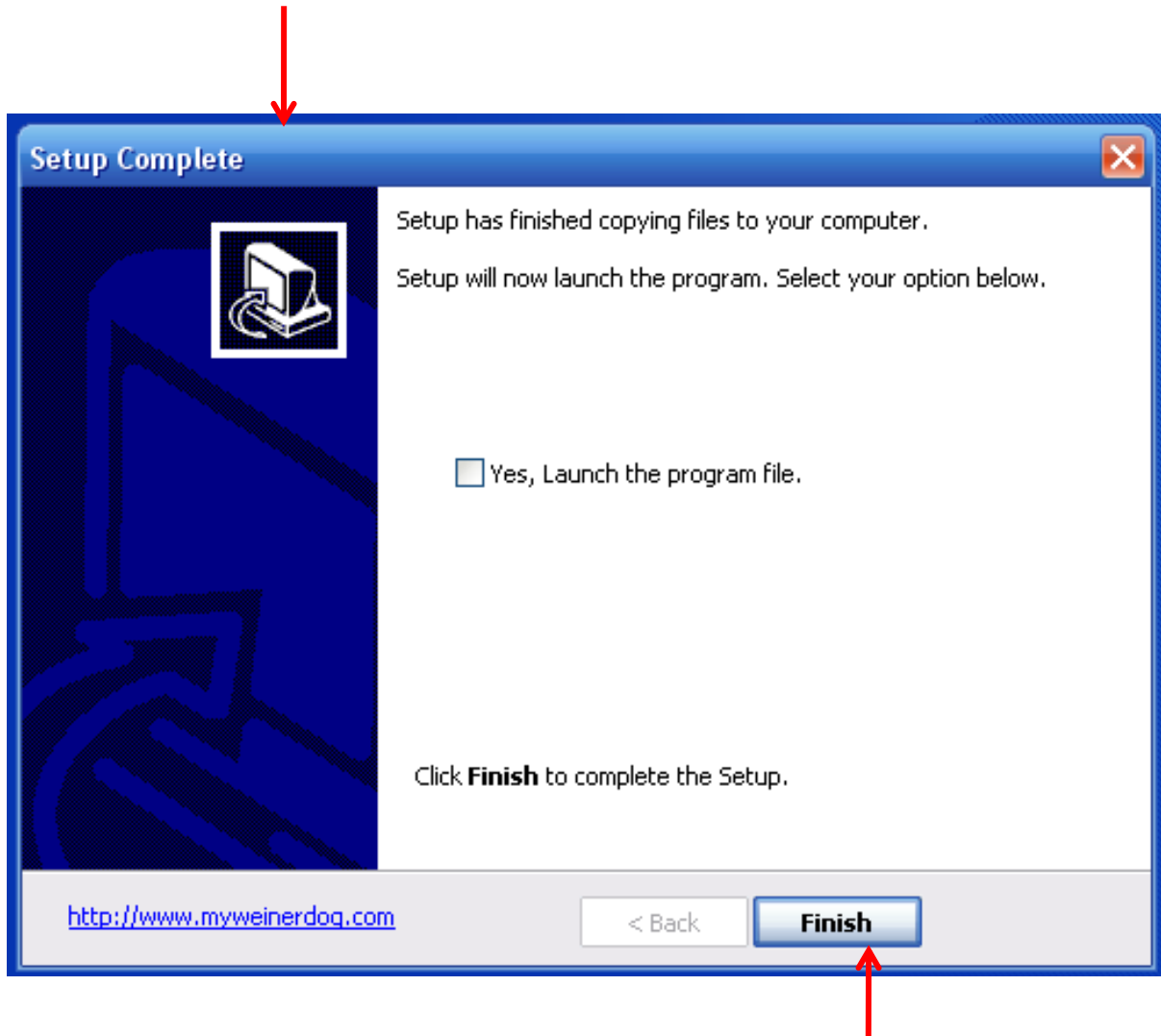
# INSTALLATION INSTRUCTIONS

**STEP 10: This screen shows the file installation progress.**



# INSTALLATION INSTRUCTIONS

**STEP 11: This screen tells that installation is complete.**



Click Finish button to complete the Setup.

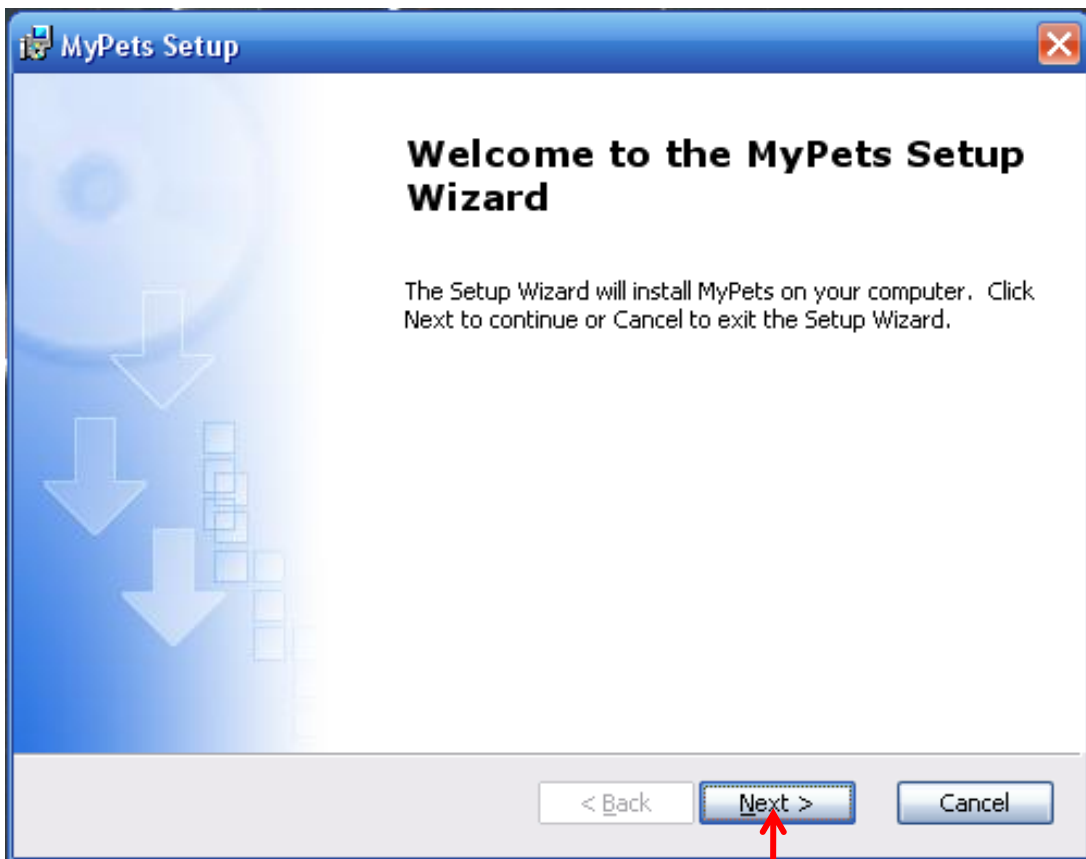
# MYPETS V1.0 INSTALLATION

**STEP 1: Click or Double Click to start MyPets v1.0 installation.**



This is the MyPets Installation Desktop Icon

MyPets Install



Click Next button to Start the Setup.

# MYPETS V1.0 INSTALLATION

## STEP 2: Customer Information screen.

Enter User Name (company name optional)

MyPets Setup

**Customer Information**

Please enter your customer information

User Name:

Organization:

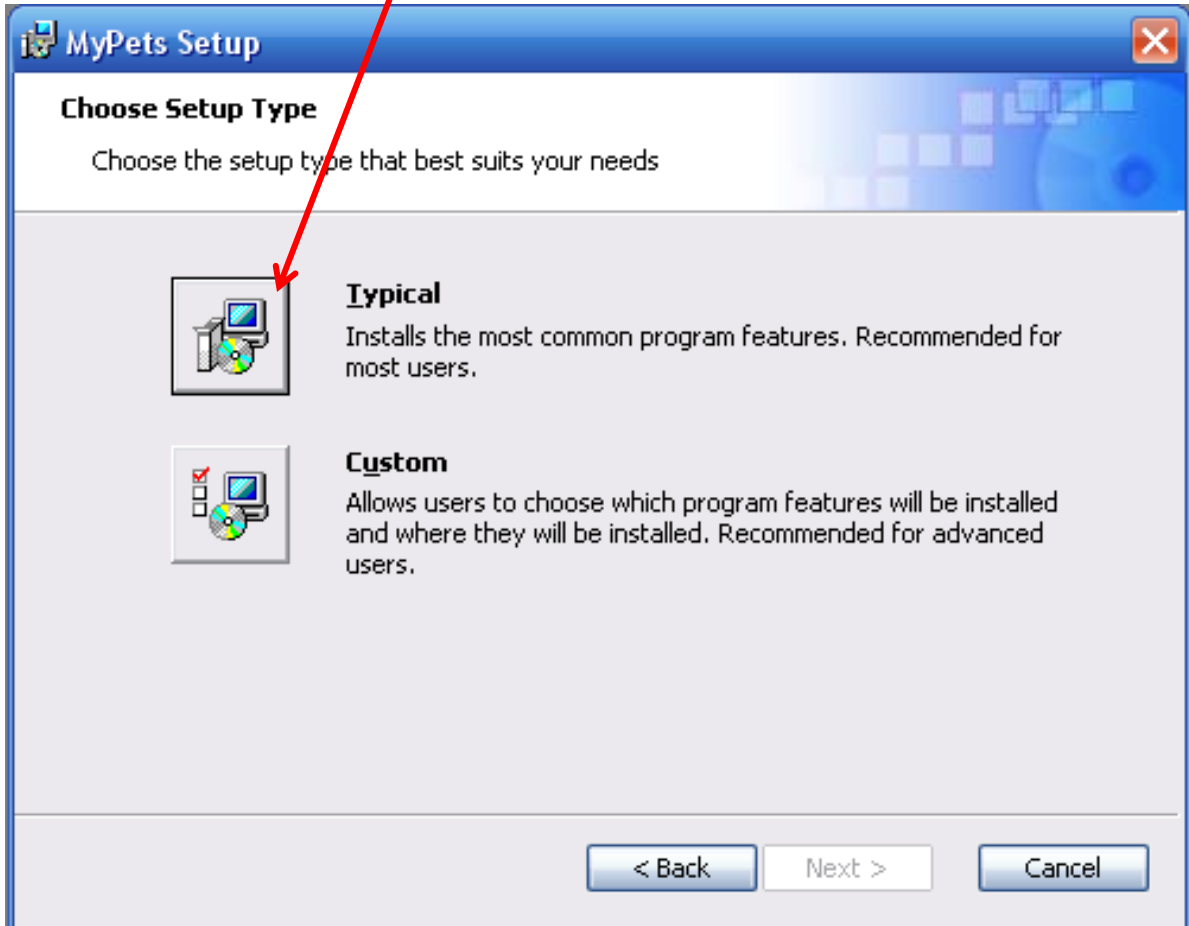
< Back    Next >    Cancel

Click Next button

# MYPETS V1.0 INSTALLATION

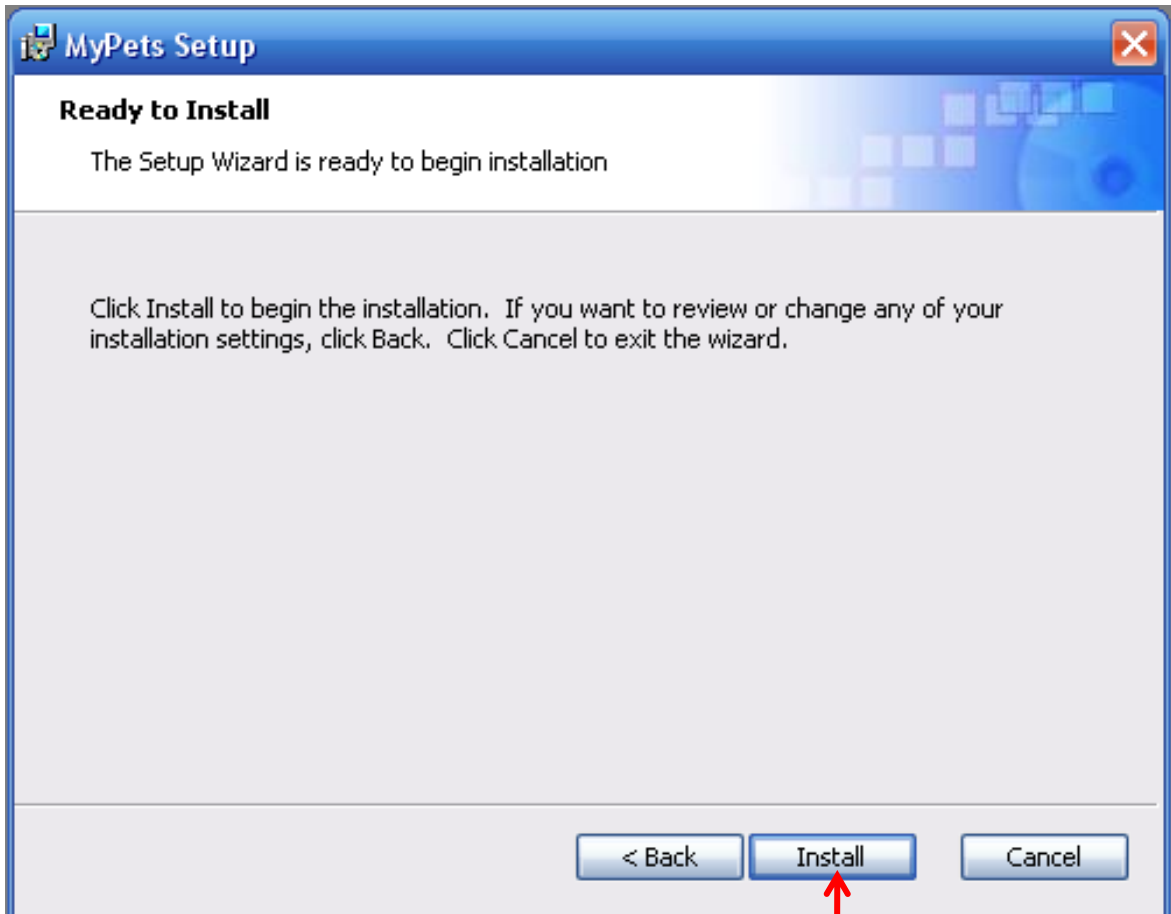
## STEP 3: Selecting Setup Type.

Select Typical (Recommended), this will take you to the next screen.



# MYPETS V1.0 INSTALLATION

## STEP 4: Ready To Install



Click Install button

# MYPETS V1.0 INSTALLATION

## Congratulations – Software Installation Complete



Click to Open MyPets v1.0 Canine Health Management program.